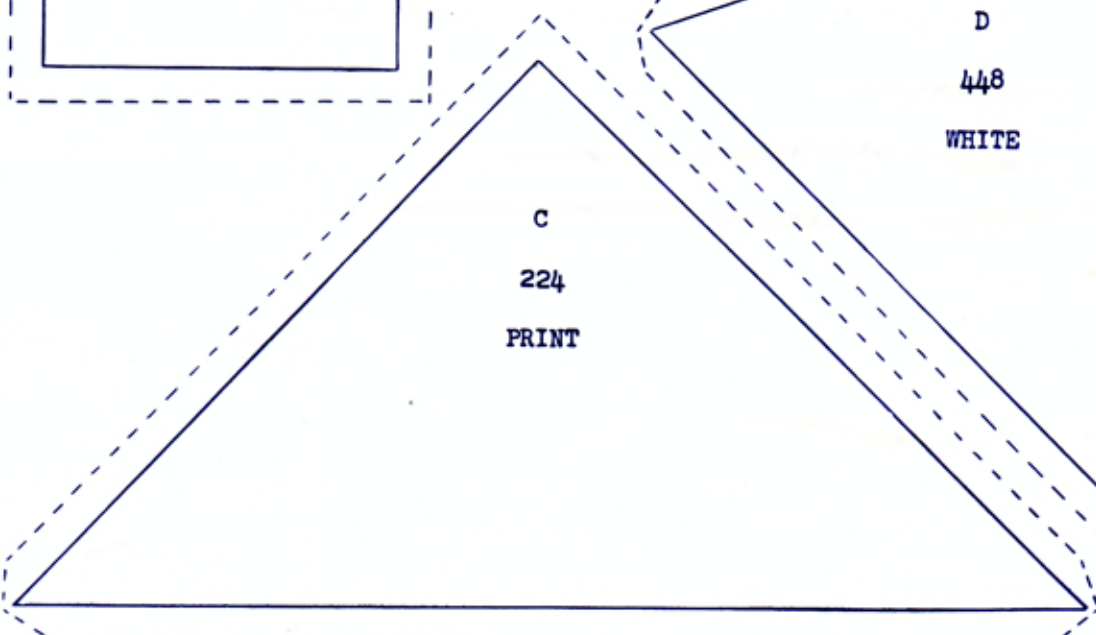
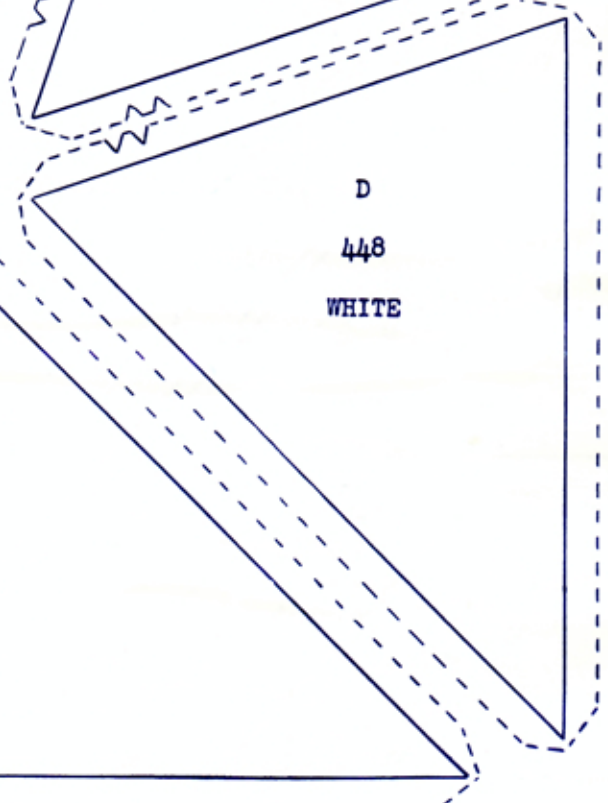
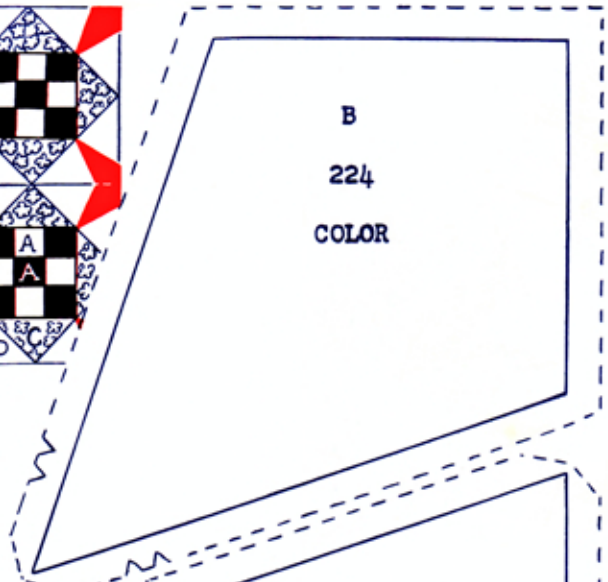
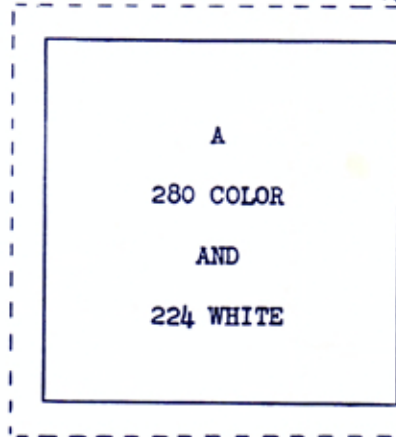
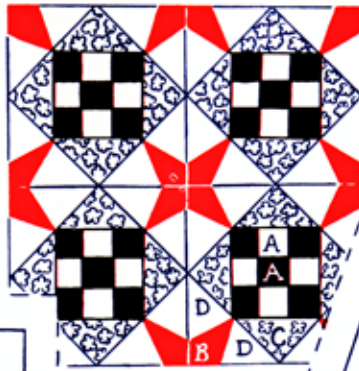


NINE-PATCH STAR QUILT
 MEASURES ABOUT 84"x96"
 WITHOUT BORDER. THERE
 ARE 56 PIECED 12"
 BLOCKS, 7 ACROSS AND
 8 UP AND DOWN.



NINE-PATCH STAR

If you are careful in your choice of print for C, you will find a surprise eight-pointed star around the square containing the four-pointed B star. This will require a print that is not too dainty.

Piece first the nine-patch; add to it the 4 C pieces. Make 4 sections of B and D pieces and join these corners to sides as illustrated. Quilt along seams. A border of one or more colors may be added if desired.

You will need about 5 yds. white, 1 1/3 yds. print, and 4 3/4 yds. plain color.

